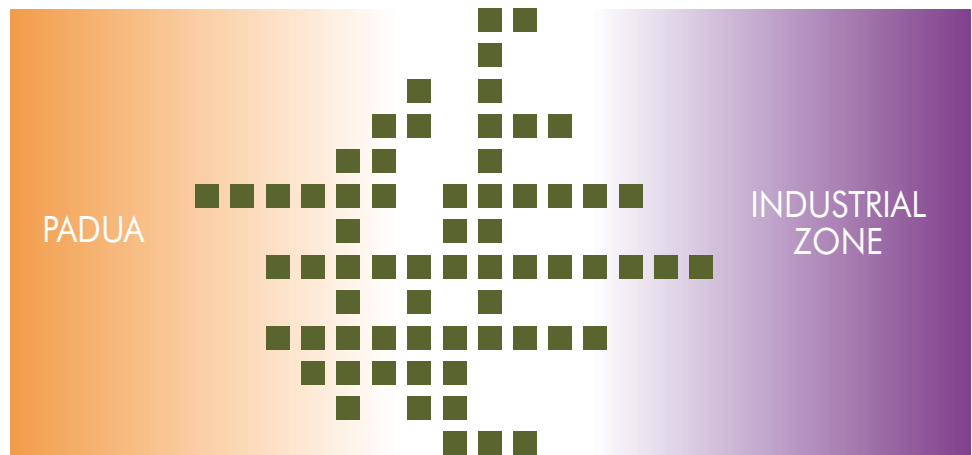




ALTERNATIVE FUTURES
FOR THE RONCAJETTE PARK
AND THE INDUSTRIAL ZONE

VERIDIS



VIRIDIS is a highly innovative project that entails the urban–environmental rehabilitation of an area comprised between the city and the industrial zone, along the Roncayette river. It combines an environmental, commercial and residential development with academic scientific–technological research and recreational activities for users.



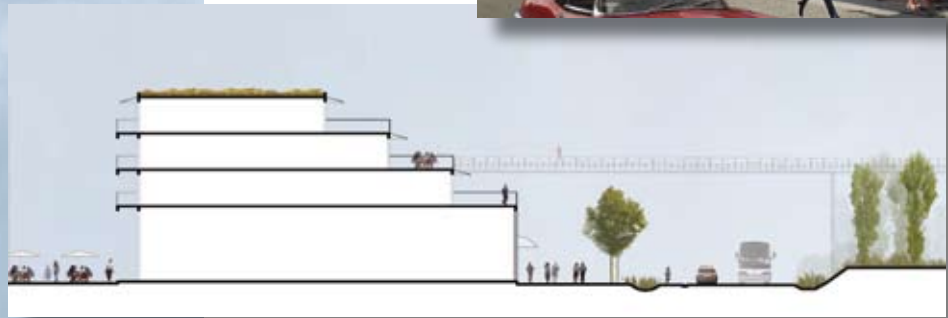
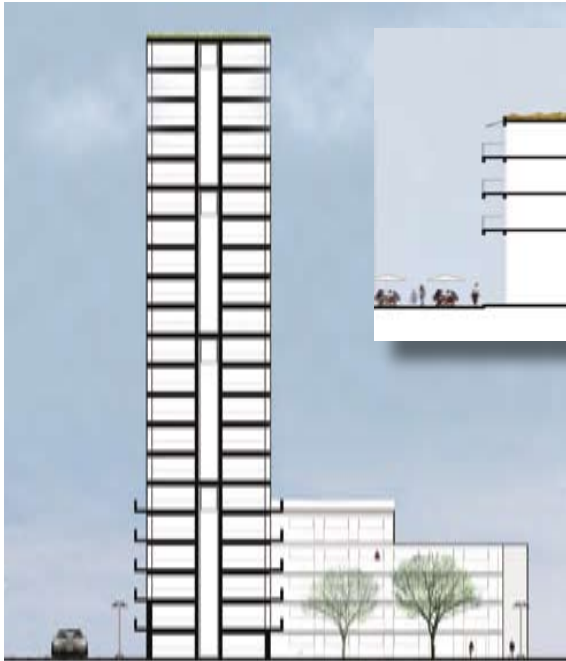
Area of intervention :	2.500.000 sq m
Total funding :	1.000.000.000 €
DEVELOPMENT	SQUARE M
commercial	200.000
offices – business center	120.000
residential	50.000
research	100.000



VIRIDIS PROJECT WILL BE IMPLEMENTED IN AN AREA WHICH ALREADY INCLUDES: 1. AN AGRITOURISM; 2. THE RONCAJETTE PARK; 3. THE FENICE PARK; 4. A HORSE FARM; 5. TERRANEGRA RESIDENTIAL AREA; 6. THE VENICE LAGOON MODEL FOR UNIVERSITY HYDROLOGIC RESEARCH; 7. A SEWAGE TREATMENT PLANT

The main objective is providing the city with a space where work, study, recreational activities and residential development can integrate. The adopted solutions aim at ensuring an economic development while meeting the highest environmental and social sustainability standards.

Commercial
200.000 SQ M
4 LEVELS



Offices and
business center
120.000 SQ M
21 LEVELS

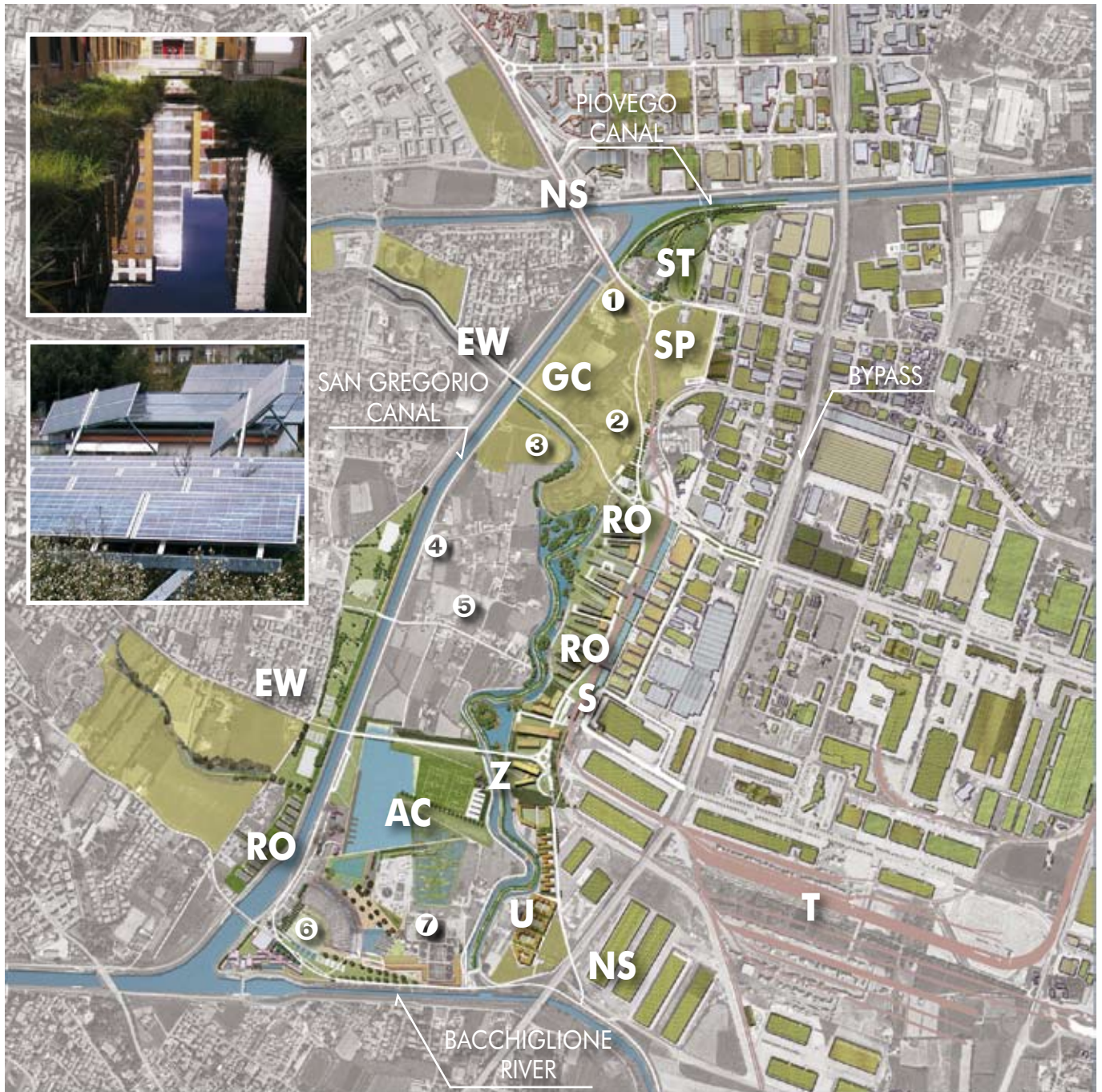


Research
100.000 SQ M
3 LEVELS



Residential
50.000 SQ M
3 LEVELS





Z ZIP's NEW HEADQUARTERS AND A NEW SERVICE CENTRE (FOR INSTITUTIONAL PURPOSES MAINLY) FOR COMPANIES AND EMPLOYEES

RO NEW RESIDENTIAL AREAS, SHOPS AND OFFICES

NS A NEW VEHICULAR ROAD RUNNING NORTH-SOUTH

EW TWO NEW VEHICULAR ROADS RUNNING EAST-WEST

U NEW UNIVERSITY PROPERTIES WITH RESEARCH LABORATORIES AND INCUBATORS

S A TRANSIT STATION FOR THE NEW PASSENGER TRAM LINE

ST A NEW SEWAGE TREATMENT PLANT FOR WATERS FLOWING INTO THE RONCAJETTE RIVER

AC A GREEN RECREATIONAL AREA SUPPLIED WITH AN AQUATIC CENTRE AND SPORTS FIELDS AND TRAILS

GC AN EDUCATIONAL GOLF COURSE

SP AN EDUCATIONAL SOCIAL PARK

T THE RELOCATION OF THE EXISTING RAIL YARD RUNNING PARALLEL TO THE RONCAJETTE RIVER TO THE SOUTHERN PART OF THE INTERPORT

A STRONG NETWORK OF BICYCLE AND PEDESTRIAN ROUTES AND CAPPED PATHS AROUND THE PARK WILL CONNECT THE INDUSTRIAL AREA TO THE CITY OF PADUA.

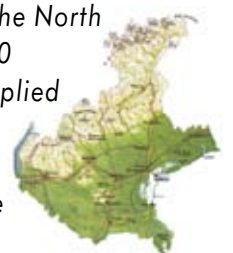
VRIDIS outlines a new scenario for ZIP and the city, by renovating – according to the standards and criteria of a sustainable development – the large area of the Roncayette river, which will become an iconic and important landscape for the city.

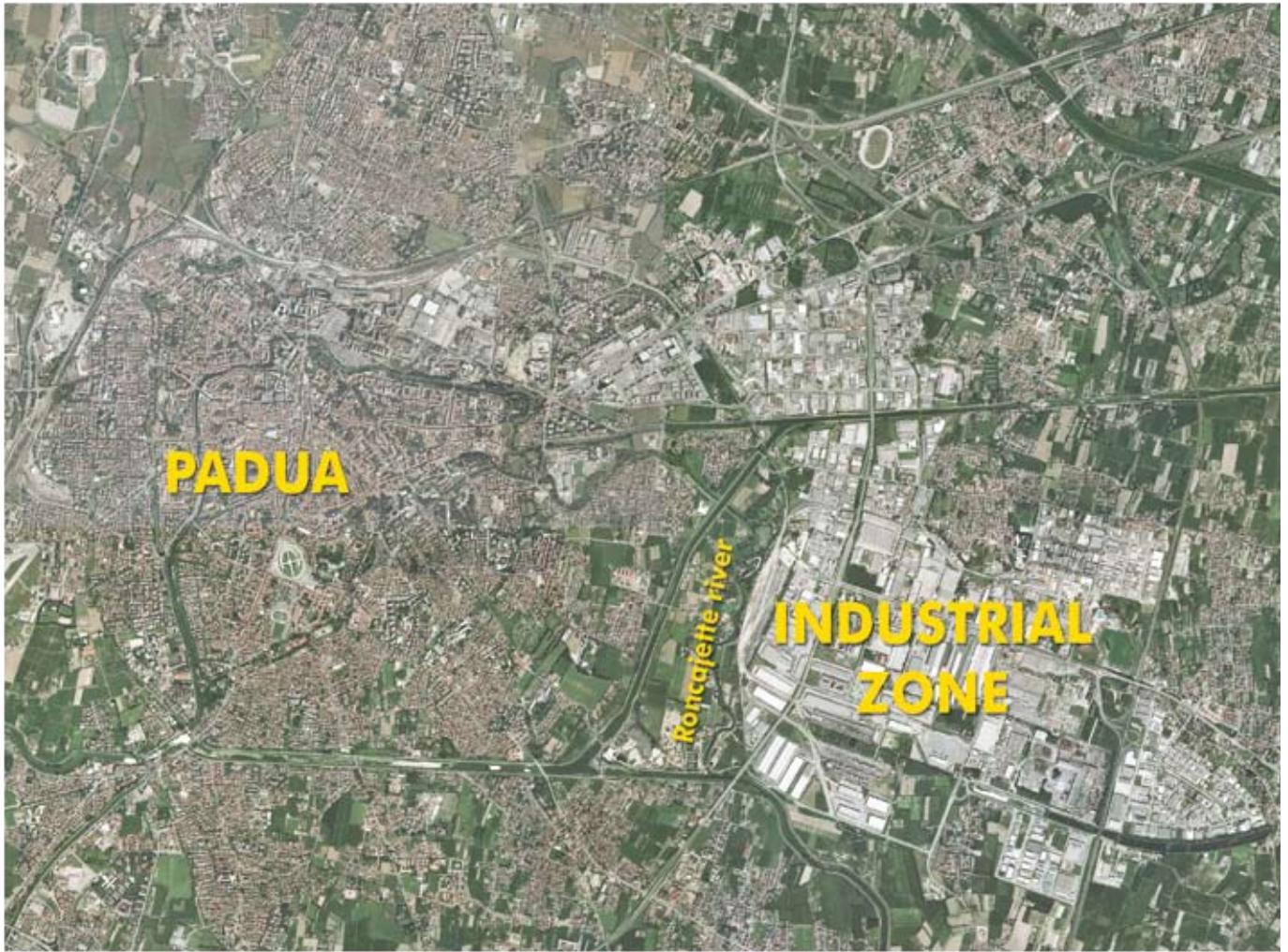


Green roofs, permeable paving, porous pavers, rainwater storage systems, solar collection devices and photovoltaic panels: these are some ecological solutions that were adopted by Harvard designers while ensuring the preservation of the historic buildings located within the area.



Padua industrial area covers about 10% of the total town territory. With its 10,5 million square meters of uninterrupted properties, ZIP is the largest managed industrial zone in the North-east of Italy. It hosts the second largest interport centre in the North of Italy and more than 1400 companies. The zone is supplied with a 7 km rail yard junction and 2 motorway exits and 18% of its surface is devoted to green areas.





VIRIDIS IS A PROJECT FOR URBAN-ENVIRONMENTAL REHABILITATION WHICH WAS ENTRUSTED TO THE HARVARD GRADUATE SCHOOL OF DESIGN BY CONSORTIUM ZIP ON BEHALF OF PADUA ADMINISTRATION.



With the support of



For further information:



ZIP Consorzio Zona Industriale e Porto Fluviale di Padova
www.zip.padova.it – galleria Spagna, 35 – 35127 Padova (Italy)
 tel +39 049 8991811 fax +39 049 761156 e-mail info@zip.padova.it